

Grow Your Resilient Community Leverage ACEs Connection

ACEs
Connection



ACEs



Adverse
Childhood
Experiences

A photograph of a diverse group of people in a community setting. In the foreground, a man with glasses is hugging a woman from behind. Other people are visible in the background, some smiling. The image is partially covered by a blue banner on the left and a dark grey overlay on the right.

ACEs Connection

**Supporting communities to
accelerate the use of ACEs
science...to solve our most
intractable problems.**

ACEs
Connection



ACEs Science

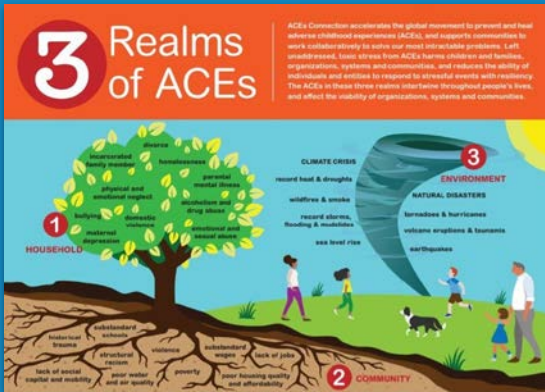
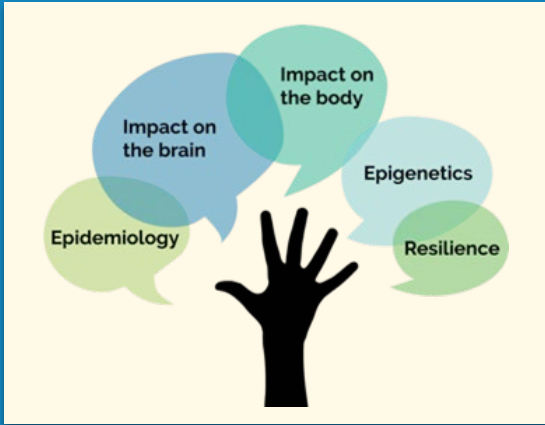
Epidemiology ACEs study and expanded ACE surveys.

Impact on the brain toxic stress caused by ACEs changes structure and function of brain.

Impact on the body health consequences of toxic stress (short & long term)

Epigenetics how toxic stress from ACEs is passed from generation to generation, aka historical trauma.

Resilience brain and body can heal with healthy relationships, healthy organizations, healthy systems, and healthy communities.



A close-up portrait of a young Black woman with long, dark braids, smiling warmly at the camera. She is wearing a dark green sweater. The background is blurred, showing other people in a crowd.

WHO WE ARE

**The social network
for the ACEs movement.**

45,000+
MEMBERS (AND GROWING)

**...who share best practices
based on ACEs science.**

ACEs
Connection

WHAT WE DO

Connect with information.

Connect with news. Connect with story.



***Addiction doc:
It's not the drugs. It's the ACEs.***



***Integrating ACEs?
Staff first, THEN patients***



***Alaska natives now center of
state ACEs movement***



***US House committee sees ACEs
in own members***

- Weekly Roundup & Daily Digest
- Resources Center
- Ask the Community

A background image showing a close-up of several pairs of hands, likely belonging to children, gently holding small green seedlings with dark soil. The hands are positioned in the foreground, and the seedlings are held up, symbolizing growth and care. The image is slightly blurred, focusing attention on the text overlays.

WHAT WE DO


Connect with support.

We support community ACEs initiatives to create solution-oriented systems.

300+
CITIES, COUNTIES & STATES

...use free community site, tools,
guidelines on ACEs Connection

A Community of Communities




ACES & African Americans

Home Blog Resources Calendar Ask the Community Surveys About Us Activity

ACES CONNECTION COMMUNITIES ACES & AFRICAN AMERICANS HOME

Blog Posts



ACES & African Americans Community on ACES Connection
MAY 10, 2018 (ACES CONNECTION STAFF) · 15 HOURS AGO

Post

- Configure Community
- Configure Home Page
- Leave Group

Questions?

Do you have questions on how to navigate the site, post on a blog, or on ACEs and resilience?

For more information, please contact:

- Engid Capacote
- Marla Samblon Abagunde



ACES in Education

A group to share ideas on mitigating the effects of adverse childhood experiences in the K-12 environment.

Home Blog Resources Calendar Ask the Community Surveys About Us Activity

ACES CONNECTION COMMUNITIES ACES IN EDUCATION HOME

Recent Blog Posts

Announcing a New Resource for Educators: Greater Good in Education (greatergood.berkeley.edu)
DANA BROWN (ACES CONNECTION STAFF) · 14 HOURS AGO

Post

Have Questions?


Do you have questions? Need help? We're here to help!

About this Community

We share ideas, information and stories about mitigating the effects of adverse childhood experiences in the K-12 environment.

Prosocial Practices Related To...

- Instruction
- Parent-Teacher Relationships
- My Work-School
- School Challenges



ACES Connection

Community Champions, Facilitators & Managers

Home Blog Resources Calendar Ask the Community Surveys About Us Activity

ACES CONNECTION COMMUNITIES ACES CONNECTION HOME

Recent Blog Posts

Adverse Childhood Experiences (ACEs): Community Impact and Resilience

Nicole Alford
MSW, LCSW
Counseling Program Manager
Family Services

Thursday March 26th 12:15 p.m.

In My Backyard: ACEs Community Impact and Resilience

ACES Connection

About this Community

Individuals who support or lead programs in the area of the greater good, such as the Greater Good Science Center, are invited to join the community. The community is a place to share ideas, information and stories about mitigating the effects of adverse childhood experiences in the K-12 environment.

ACES Connection

ACES Connection



Practicing Resilience for Self-Care & Healing



ACES in Pediatrics

State ACEs Action
The go-to location for ACEs activities in the states.

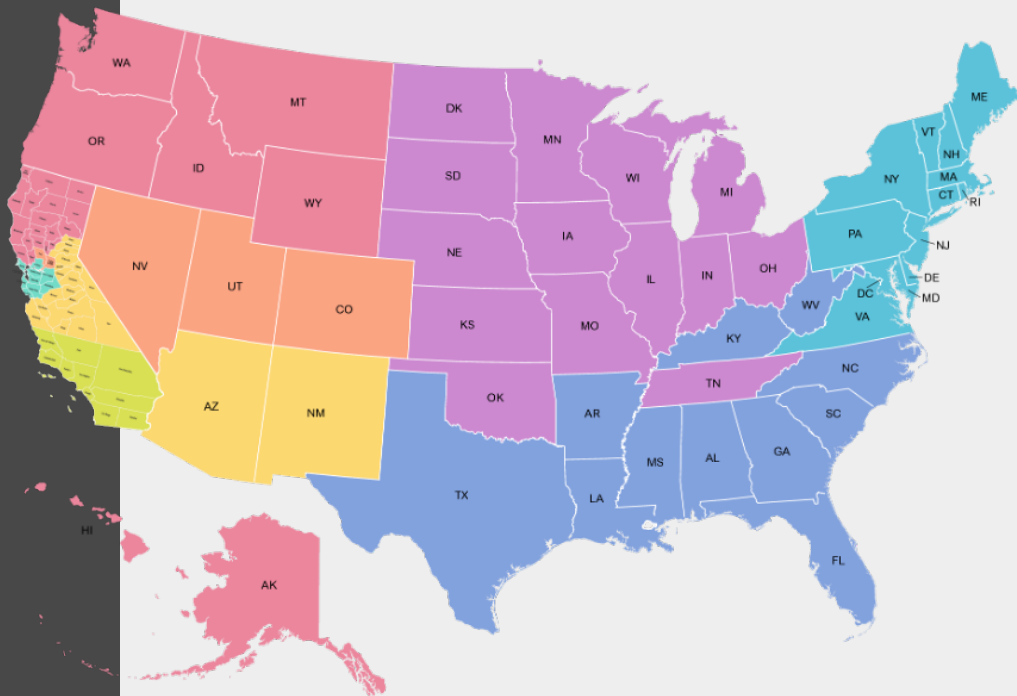


Connect with know- how



Community Facilitators' Regions

- Northwest & Northern CA: Karen Clemmer
- West: Gail Kennedy
- Southwest: Rafael Maravilla
- Southern California: Lara Kain
- San Francisco Bay Area, CA: Donielle Prince
- Northeast: Alison Cebulla
- Southeast: Carey Sipp
- Midwest & Tennessee: Ingrid Cockhren



Resources



- **ACEs 101** – FAQs about adverse childhood experiences research with links to reports, stories and videos.
 - **Got Your ACE Score?** – Do your ACE score and your resilience score, and find out more about the consequences of each.
 - **ACEsConnection.com** – A social network for people who are implementing – or thinking about implementing – trauma-informed and resilience-building practices based on ACEs research.
 - **ACEsConnectionInfo.com** — This is ACEs Connection’s “brochure” site. It provides an overview, mission, history, and staff profiles.
-
- **The CDC-Kaiser Permanente ACE Study** – The official ACE Study site, provided by the CDC.
 - **The Center on the Developing Child at Harvard University** – Here, take a deep dive into a site rich with reports, tools and videos about the neurobiology of toxic stress and resilience.
 - **SAMHSA’s Concept of Trauma and Guidance for a Trauma-Informed Approach** – Introduces a concept of trauma and offers a framework for how an organization, system, or service sector can become trauma-informed. Includes a definition of trauma (the three "E's"), a definition of a trauma-informed approach (the four "R's"), 6 key principles, and 10 implementation domains.

